



PTE LTD
Select The Right Elements
www.mdx.com.sg



PYLONS

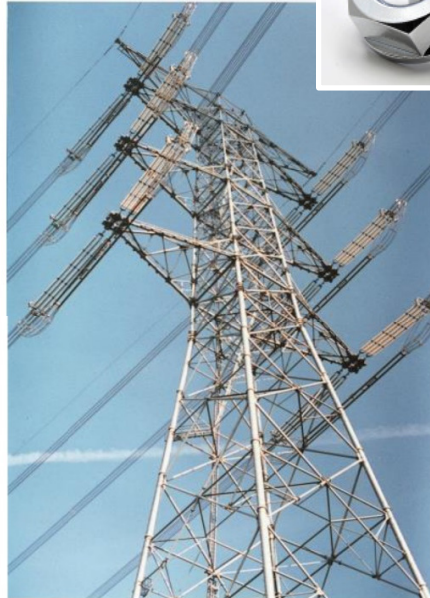
【MAIN APPLICATIONS】

- **Communications Tower**
 Joint
 Ancillary Equipment
 Steel Frame Etc.
- **Transmission Tower**
 Pipe Jumper
 Insulators Fastening Etc.



MADE IN JAPAN |
Since 1974

Safety is Power
Anti-Vibration
Hexagon Nuts



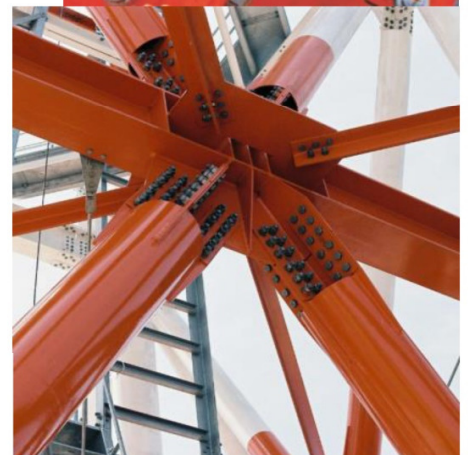
Transmission Tower



Communications Tower



Joint (Angle/Pipe)



Joint (Angle/Pipe)



Smallest parts that require highest reliability
All Grades & Surface Treatment
Bore $\varnothing 5 \sim \varnothing 130.0\text{mm}$



Transmission Tower Pipe Jumper



Steel Frame for Digital Equipment